

# **Harrisville Central School District**

## **AIS/RTI Intervention Plan K-12**

**2020-2022**

### **Academic Intervention Services (AIS)**

Academic Intervention Services (AIS) means additional instruction which supplements the instruction provided in the general curriculum and assists students in meeting the NY State Learning Standards. Academic Intervention Services are intended to assist students who are at risk of not achieving the NY State Learning Standards in English language arts, mathematics, social studies and/or science, or who are at risk of not gaining the knowledge and skills needed to meet or exceed designated performance levels on state assessments. Academic Intervention Services shall be made available to English Language Learners and students with disabilities. In the case of AIS being provided to students with disabilities, services will be provided on the same basis as those provided to non-disabled students, as long as those services are consistent with the student's individualized education program.

Academic Intervention Services includes two components:

- Additional instruction that supplements the general curriculum
- Student support services needed to address barriers to improved academic performance

Academic services will be provided to students in English language arts and mathematics in grades K-12 and social studies and science in grades 4-12. Support services will be provided to address barriers to increased academic performance related to attendance, behavior, family difficulties, health issues, lack of study skills, and transition or mobility issues.

### **Response to Intervention**

Effective July 1, 2012, all school districts in NYS must have an RTI program in place as part of its evaluation process to determine if a student in grades K-5 is a student with a learning disability in the area of reading. The decision as to whether a student has a learning disability must be based on extensive and accurate information that leads to the determination that the student's learning difficulties are not the result of the instructional program or approach. RTI is an effective and instructionally relevant process to inform these decisions. NYS Regulations define RTI as a school district's process to determine if a student responds to scientific, research-based instruction, which minimally must include:

- Appropriate instruction delivered to all students in the general education class by qualified personnel.
- Screenings administered to all students for the purpose of identifying those students who are not making academic progress at expected rates.
- Instruction matched to student need with increasingly intensive levels of targeted intervention and instruction for students who do not make satisfactory progress in their levels of performance and/or in their rate of learning.
- Repeated assessments of student achievement which should include curriculum based measures.
- Written notification to the parents regarding the nature and scope of interventions.

## AIS/RTI Procedures

- At the end of the year the teachers identify students for AIS based on a number of criteria because the student is at risk of failing to meet the State learning standards.
- During the summer the principals with the guidance counselor and reading teachers decide who will receive AIS by reviewing students’ results on the identified multiple measures and teacher, Grade Level Team and Instructional Support Team (IST) recommendations. The AIS Eligibility Lists are reviewed at the beginning of the school year.
- Principals can assign students to AIS or discontinue service at any time it is needed as advised by the Grade Level Team or IST.
- The principals will oversee the implementation of the parent notification requirements.
- The RTI process is used in K-5 Reading to identify students that need to be referred to CSE. The process and responsibilities are outlined in the attachments.

## AIS Instructional Needs

**Eligibility for AIS:** Identification for AIS and intensity of service is based on multiple measures for each grade and subject area: Grades K-12 ELA and math, Grades 4-12 social studies and science. Students are identified for AIS at the Tier I – III level if they:

<b>Tier 1: Monitoring</b>	<b>Tier 2 – Moderate Risk</b>	<b>Tier 3 – High Risk</b>
<ul style="list-style-type: none"> <li>▪ Lack skills needed to maintain/monitor his/her own academic achievement (e.g., organizational skills, listening skills, test-taking skills, etc.)</li> <li>▪ Grades K-8: performing at or below a median cut point score between a Level 2/partially proficient and a Level 3/proficient on the NYS Assessments and/or do not meet one of the benchmark criteria</li> <li>▪ Grades 9-12: score below proficiency on the NYS Regents and/or do not meet one of the benchmark criteria</li> </ul>	<ul style="list-style-type: none"> <li>▪ Are inconsistent in demonstrating expectations of grade level. Consistently lack some specific skills that are required for satisfactory performance.</li> <li>▪ Grades K-8: score a low Level 2 below specified scale score on NYS Assessments and/or do not meet two of the benchmark criteria</li> <li>▪ Grade 9-12: score below proficiency on the NYS Regents and/or do not meet two of the benchmark criteria</li> </ul>	<ul style="list-style-type: none"> <li>▪ Are potentially at-risk of not achieving the New York State Learning Standards and/or meeting graduation requirements.</li> <li>▪ Grades K-8: score Level 1 on NYS Assessments and/or do not meet at least two of the benchmark criteria. The measure used, as well as degree of discrepancy is taken into account.</li> <li>▪ Grades 9-12: score below proficiency on the NYS Regents and/or do not meet at least two of the benchmark criteria. The measure used, as well as degree of discrepancy is taken into account</li> </ul>

### **Exiting AIS: Based on multiple measures**

It is determined that a student is achieving the standards if they have:

- Achieved proficiency on the content area NYS assessment and/or
- Achieved the benchmark criteria on two or more of the multiple measures outlined above

## AIS/ RTI Criteria

Subject and Grade	Multiple Measures	Benchmark Criteria
All subjects K-12	Student Attendance	High rate of absenteeism may be related to academic difficulty.
	Teacher Recommendation	Comments from teachers are considered in overall evaluation.
ELA K-6	Classroom Average	Grades K-6: Level 3 or 4
	NYS ELA Assessment: Grades 3-6	Level 3 or 4
	Fountas and Pinnell	Benchmarked three times a year. Progress monitoring conducted for students not achieving the benchmarks. See attachment for benchmarks per assessment and grade level.
	i-Ready ELA Grades K-6	Benchmarked three times a year. Progress monitoring conducted for students not achieving the benchmarks.
	Running Records Grades K-6	Ongoing progress monitoring for all students.
ELA 7-12	Classroom Average	65%
	Final Exam	65%
	NYS ELA Assessment: Grades 7-8	Level 3 or 4
	i-Ready ELA Grades 7-8	Benchmarked three times a year. Progress monitoring conducted for students not achieving the benchmarks.
	English Language Arts Regents at Grade 11	65%
Math K- 6	Classroom Average	Grades K-6: Level 3 or 4
	NYS Math Assessment: Grades 3-6	Scoring level 3 or 4
	i-Ready Math Grades K-6	Benchmarked at least three times a year. Progress monitoring conducted for students not achieving the benchmarks.
Math 7-12	Classroom Average	65%
	NYS Math Assessment: Grades 7-8	Level 3 or 4
	i-Ready Math Grades 7-8	Benchmarked at least three times a year. Progress monitoring conducted for students not achieving the benchmarks.
	Algebra and Geometry Regents	65%

Subject and Grade	Multiple Measures	Benchmark Criteria
Social Studies 4-12	Classroom Average	Grades 4-6: Level 3 or 4 Grades 7-12: 65%
	Final Exam: Grades 7-9	65%
	NYS ELA Assessment Grades 4-8	Students who score at levels 1 or 2 on the assessment at Grade 4-8 will be identified to determine whether their performance on the assessment is attributed to difficulty in areas of Social Studies content or reading and writing.
	Global History and Geography Regents	65%
	United States History and Government	65%
	NYS Science Assessment at Grades 4 and 8	Level 3 or 4
	NYS Math and ELA Assessment	Students who scored at Level 1 or 2 on the assessment in Grades 4 - 8 will be identified to determine whether their performance on the Science assessment is attributed to difficulty in the areas of reading, writing or math.
	Final Exam: Grade 7-8	65%
	Physical Settings in Earth Science and Living Environment Regents, Chemistry and Physics	65%

## AIS/RTI Intervention Program Description

	<b>Tier 1 – Monitoring</b>	<b>Tier 2 – Moderate Risk</b>	<b>Tier 3 – High Risk</b>
<b>Intensity of service</b>	Core Instruction for all students	In addition to core instruction: Minimum 3 times a cycle for 30 minutes	Support provided daily for a minimum of 30 minutes addition to Tier 1
<b>Grouping</b>	Differentiated small group instruction	Small group 4-6 students:	Individual or small group 1-3 students
<b>Staffing</b>	Classroom teacher supported by AIS teacher, teaching assistant and special education teacher as schedules allow	AIS teacher, classroom teacher and teaching assistant	AIS teacher, special education teacher, classroom teacher
<b>Program/ Instructional Support</b>	<ul style="list-style-type: none"> <li>▪ Differentiated instructional strategies used in the regular classroom are: preferential seating, reduce number of items expected to be worked on by student (homework and classwork), read directions, simplify concepts, extend timeframes, use Effective Teaching Strategies</li> <li>▪ Classroom teachers will identify similar skill needs and use flexible grouping for instruction based on student need</li> </ul>	<ul style="list-style-type: none"> <li>▪ Tier I support</li> <li>▪ Small group with similar needs instruction and collaboration with classroom teachers (workshop model)</li> </ul>	<ul style="list-style-type: none"> <li>▪ Tier I and Tier II support as schedule allows</li> <li>▪ Individual or small group instruction for high-needs students as schedule allows</li> <li>▪ Other support may include: special education support</li> </ul>

# **Student Support Services**

## **Instructional Support Team**

**BOCES intern program** – on availability, students from the Early Childhood Program

- K-2
- 3 times per week

## **Parent Volunteers**

## **Student Volunteers/High School**

**SUPER Ed Program** – Mountain View Prevention

**Counseling Services-** as deemed appropriate for the needs of individual students

- School counselors
- School psychologist
- Group and Individual Counseling

**Responsive Classroom program grades K-6**

**PBIS – grades 7-12**

**Jeff-Lewis BOCES – Safety Program**

**Bike & ATV & Halloween Safety** - Lewis County Sheriff's Dept.

**Occupational Therapy** – as deemed appropriate for the needs of individual students

**Speech Improvement**– as deemed appropriate for the needs of individual students

**Physical Therapy** – as deemed appropriate for the needs of individual students

**Grades 7-12: Guidance Services** - Academic and Social Support

**Grades 7-12: Student Assistance Program-** Mountain View Prevention Services

# Parent Involvement Requirements

## Notification of AIS/RTI Services

- ◆ District notification letter to include:
  - dates when service will start
  - reasons why student needs AIS.
    - subject area(s) identified
    - results of multiple measures
    - summary of services to be provided
    - student support services to be provided
    - frequency and intensity of service
    - expectations of students in relation to grade level performance
    - consequences of not achieving expected performance levels
- ◆ Additional notification required for RTI reading grades K-6
  - strategies for increasing the student's rate of learning; and
  - the parents' right to request an evaluation for special education programs and/or services

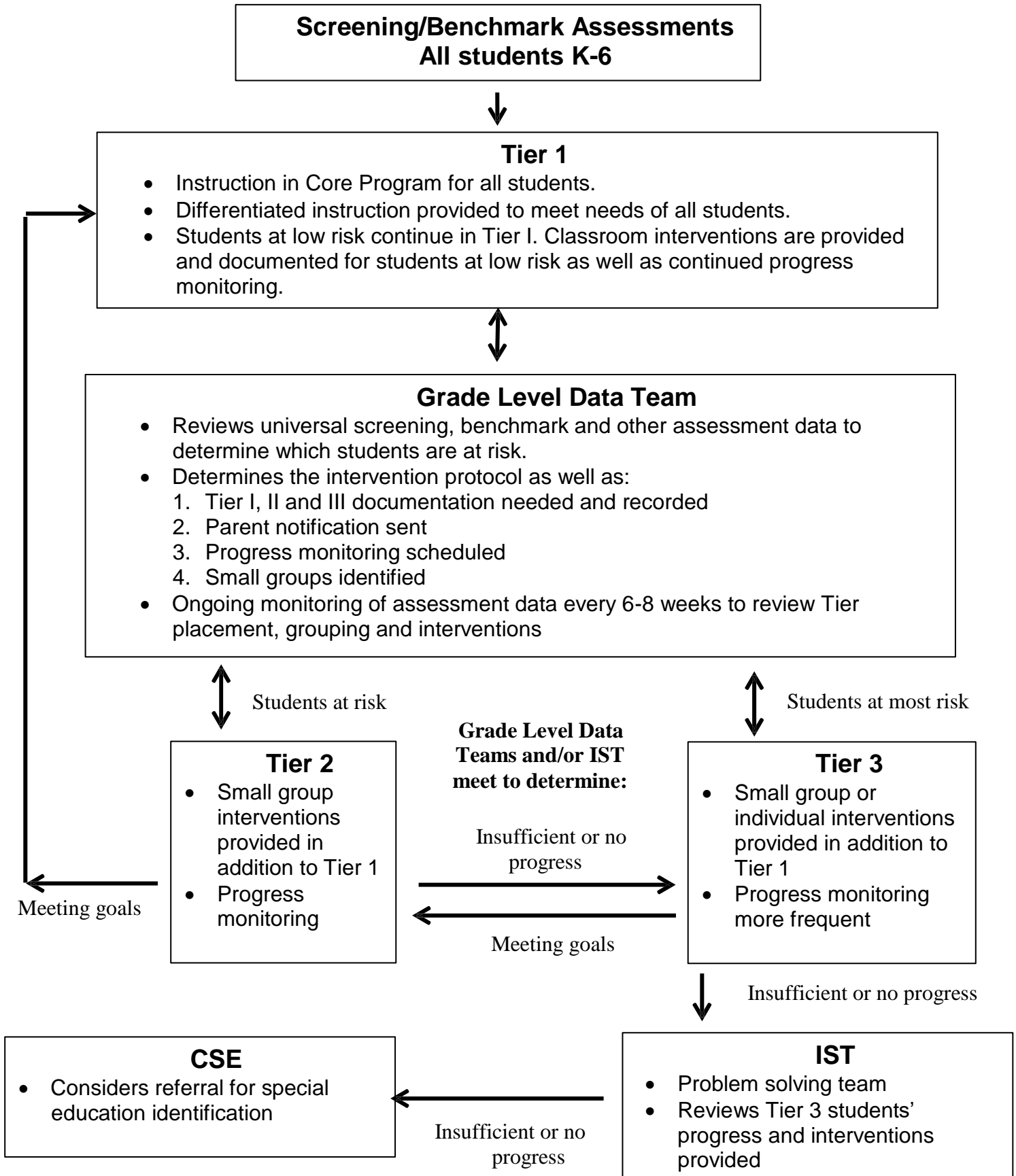
## Notification of End of AIS/RTI Services

- ◆ District notification letter to include:
  - when services are to be discontinued
  - overview of student's progress
    - performance level student has attained to qualify for ending AIS (results of multiple measures)
    - assessments used in determining students levels of performance

## Ongoing Communication

- ◆ Fall/Spring teacher conferences
- ◆ Quarterly reports
- ◆ Phone calls
- ◆ District and Title I newsletters
- ◆ District website
- ◆ SchoolTool parent portal
- ◆ Emails to parents
- ◆ Parent conferences or other informal consultations each semester
- ◆ Suggestions for working with students at home

# RTI Process Flowchart





## RTI Problem Solving Process – Responsibilities

Classroom Teachers	Grade Level Teams	Intervention Providers	Instructional Support Team	CSE Team
<ul style="list-style-type: none"> <li>• Core instruction</li> <li>• Benchmark and progress monitoring assessments</li> <li>• Tier 1 interventions (small group, differentiated, during the core block)</li> <li>• Documentation of Tier 1 interventions</li> </ul>	<ul style="list-style-type: none"> <li>• Grade level teams                             <ul style="list-style-type: none"> <li>○ Classroom teachers</li> <li>○ Intervention providers</li> <li>○ Others</li> </ul> </li> <li>• Analyze data to inform instruction                             <ul style="list-style-type: none"> <li>○ Core assessments</li> <li>○ Diagnostic assessments</li> </ul> </li> <li>• Determine Tier 1 and Tier 2 groupings, discuss need for Tier 3 intervention</li> <li>• Provides documentation of decisions made re: instructional changes</li> </ul>	<ul style="list-style-type: none"> <li>• Tier 2 interventions (at least 30 minutes 3x/cycle) in addition to core instruction</li> <li>• Progress monitoring and diagnostic assessments</li> <li>• Documentation of Tier 2 interventions</li> </ul> <p style="text-align: center;">AND</p> <ul style="list-style-type: none"> <li>• Tier 3 interventions (at least 30 minutes 3x/cycle in addition to Tier 1)</li> <li>• Progress monitoring and diagnostic assessments</li> <li>• Documentation of Tier 3 interventions</li> </ul>	<ul style="list-style-type: none"> <li>• Multi-disciplinary team                             <ul style="list-style-type: none"> <li>○ Classroom teachers</li> <li>○ Special education teacher</li> <li>○ Psychologist</li> <li>○ Principal</li> <li>○ Intervention providers</li> <li>○ Others</li> </ul> </li> <li>• Students reviewed when no significant progress has been made at Tier 2 and/or Tier 3</li> <li>• Reviews documentation of Tier 1, 2 and 3 interventions</li> <li>• Uses problem solving model to recommend further instructional changes or interventions to be tried, along with ways to document the effectiveness of the changes</li> <li>• Makes referral to CSE when necessary</li> </ul>	<ul style="list-style-type: none"> <li>• Multi-disciplinary team</li> <li>• Analyzes data</li> <li>• Reviews documentation of Tier 1, 2,3 interventions</li> <li>• Decides what additional CSE services to provide to enable the child to be successful</li> </ul>